

A photograph of a modern house with a man standing in the doorway. The house features a mix of materials: horizontal wood slats on the left, a white central section, and a dark grey section on the right. The entrance is framed by a large glass door with horizontal wood slats. A man in a blue shirt and tan pants stands in the doorway. A concrete walkway with a black metal railing leads up to the entrance. Two small evergreen trees are planted on either side of the walkway. The background shows a lush green lawn and trees.

[REINTERPRETING] THE SUBURBAN HOUSE

A BREATH OF FRESH AIR

THE DIVINE HOUSE
MCLEAN, VA
RESIDENTIAL ARCHITECTURE

This contemporary home located in the suburbs of Northern Virginia features an open living concept that makes every effort to bring the outdoors in. Each volume of the house is cut away to reveal a warm and inviting palette of natural wood and stone inside and out. On the interior, a large, central living area is surrounded by interlocking secondary spaces nestled around it. Each room is uniquely designed with ample daylighting and direct access to the outdoors via large-scale low-E glass doors and windows. The master bedroom has direct access to the rear courtyard while bedrooms on the second floor share a common balcony. The dining room and kitchen each have access to outdoor spaces, stretching the livable area well beyond the home's walls.

Neighboring properties are characterized by long asphalt driveways and prominent garage doors. In lieu of this, the Divine House features a tar and chip front courtyard that doubles as a flexible space for parking, sports and play. A large front porch off of the dining room is used for entertaining friends and creates a welcoming street presence. The windows at the front entry give visitors a glimpse of the beautiful yard, pool and landscape at the rear of the home.

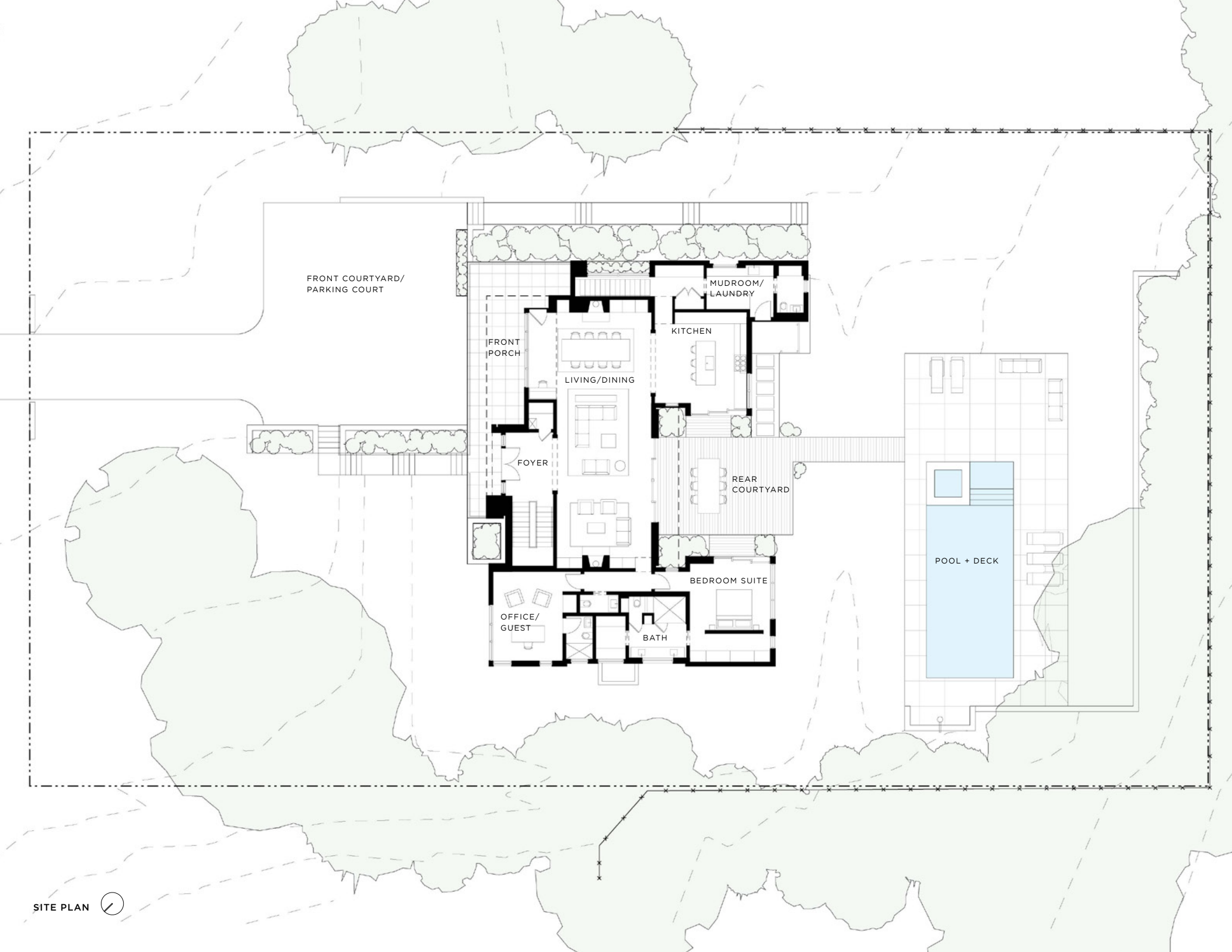




ABOVE: IN LIEU OF A DRIVEWAY, CARS ENTER FROM THE STREET ONTO A PVIOUS GRVEL STONE PARKING COURT; GARAGE DOORS ARE TUCKED UNDER A LARGE WRAP-AROUND FRONT ENTRY PORCH



EXISTING HOME





ENTRY FOYER



FLOATING STAIR



MATERIALITY EMPHASIZES THE CONNECTION BETWEEN EXTERIOR AND INTERIOR WHILE LOW-E GLASS DOORS PROVIDE TEMPERATURE CONTROL



THE FLOOR PLAN FLOWS FROM ONE ROOM INTO ANOTHER WHILE LED AND NATURAL LIGHTING KEEP ROOMS BRIGHT



THE CENTRAL LIVING SPACE WITH SLIDING DOOR OPENS TO AN EXPANSIVE DECK EXTENDING THE ROOM OUTDOORS



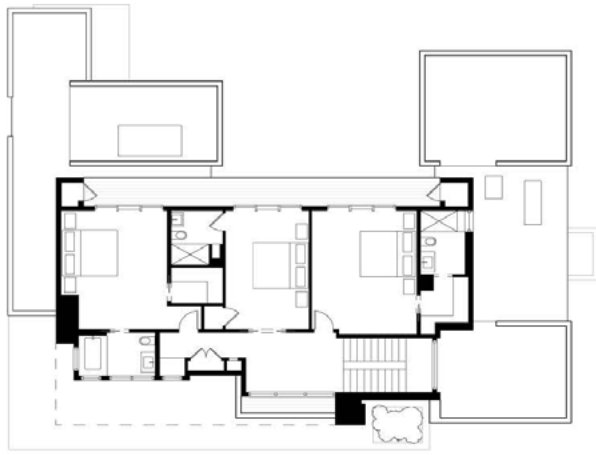
LARGE AREAS OF GLASS CONNECT THE INTERIOR AND EXTERIOR LIVING SPACE AND HELP TO DRAW CONNECTIONS WITH THE EYE



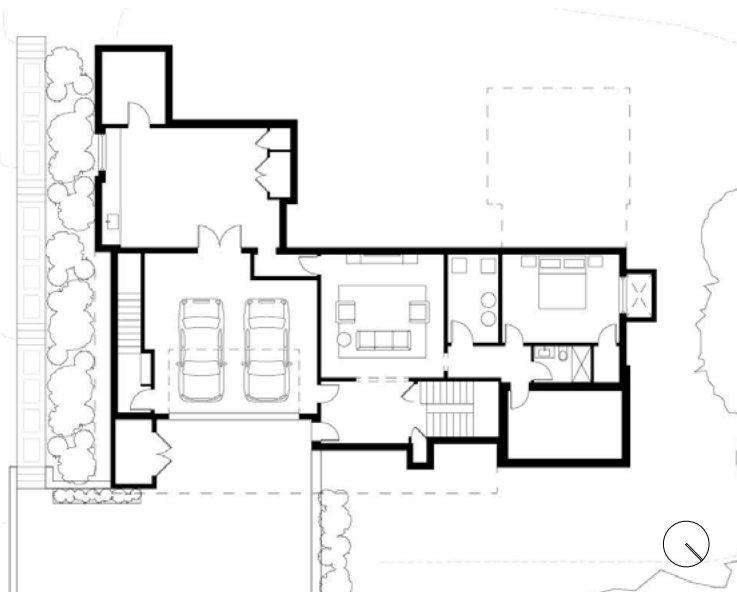
KITCHEN



KITCHEN VIEW CONNECTING INTERIOR TO EXTERIOR LIVING SPACE



SECOND FLOOR PLAN



GROUND FLOOR PLAN



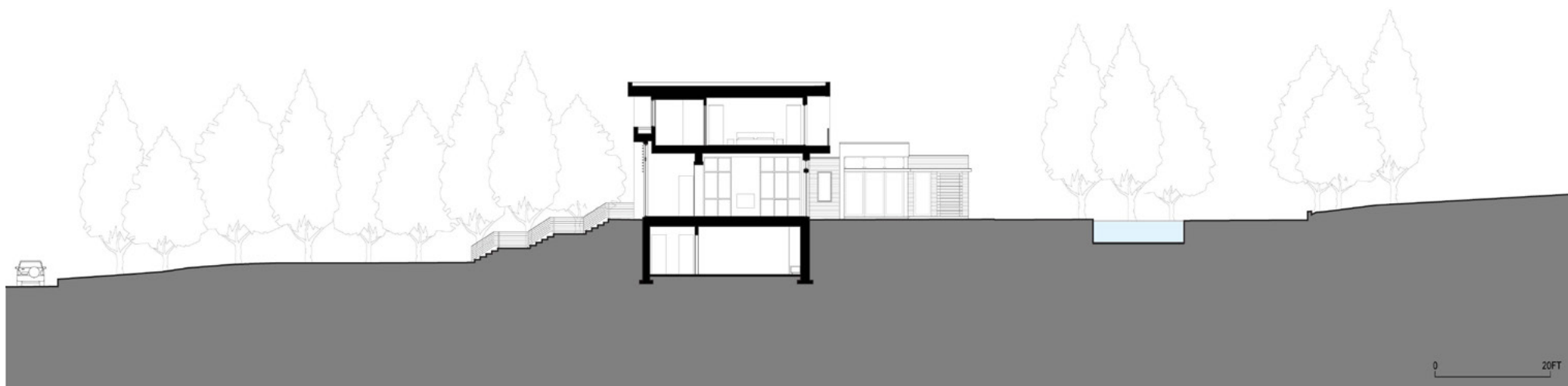
TYPICAL BATH WITH SKYLIGHT & CLEARSTORY WINDOW



AT THE DIVINE HOUSE EQUAL EMPHASIS IS PLACED ON
BOTH INTERIOR AND EXTERIOR LIVING SPACE



REAR/SOUTH ELEVATION



TRANSVERSE SITE SECTION



FRONT/NORTH ELEVATION AT DUSK